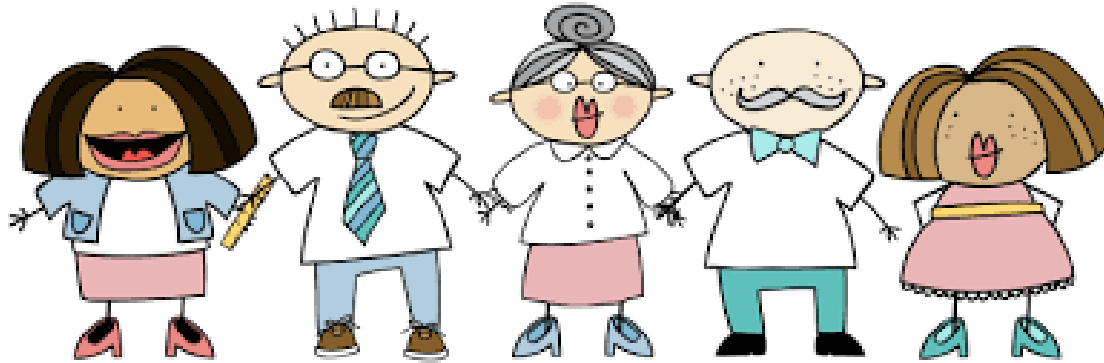




Starting School at Rowley Park Academy



Monday 7th
September



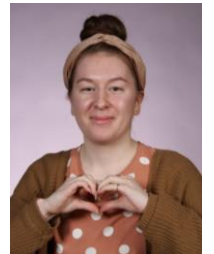
Mrs Lord Class Teacher



Miss Lea Teaching Assistant



Miss Spear Teaching Assistant



Settling in...

- The children will start school in smaller groups to begin with so that they have time to settle into routines and get to know staff
- Week beginning 7th September children will be given a morning or afternoon slot
- Week beginning 14th September children in full time

The School Day

- School starts at 8.50am prompt. Please bring your child on to the Key Stage 1 playground.
- Lunch is at 11.45am
- School finishes at 3.15pm. Please ensure staff or office staff have been made aware if someone else is picking up your child.
- School phone number is 01785 334144, please telephone in the case of illness or absence.

What will my child need?

- Named Uniform
- PE kit
- Homework / Reading books
- Suitable outdoor jacket
- Wellies



Please no toys from home!!! Children will have opportunity to show and tell from time to time.



- The government fund ALL children in Reception to have a free school meal. Please encourage your child to eat a variety of different foods and take advantage! Menus are available from the office.
- Packed lunches can be brought in from home.

The school day...

What will my child do at school for
all that time?

They are so SMALL?!



Early Years Foundation Stage

- EYFS
- Areas of Learning
- Ages and Stages
- Early Learning Goals

Early Learning Goals

Literacy	Reading	Children read and understand simple sentences. They use phonic knowledge to decode regular words and read them aloud accurately. They also read some common irregular words. They demonstrate understanding when talking with others about what they have read.
	Writing	Children use their phonic knowledge to write words in ways which match their spoken sounds. They also write some irregular common words. They write simple sentences which can be read by themselves and others. Some words are spelt correctly and others are phonetically plausible.
Maths	Number	Children count reliably with numbers from one to 20, place them in order and say which number is one more or one less than a given number. Using quantities and objects, they add and subtract two single-digit numbers and count on or back to find the answer. They solve problems, including doubling, halving and sharing.
	Shape, Space and Measure	Children use everyday language to talk about size, weight, capacity, position, distance, time and money to compare quantities and objects and to solve problems. They recognise, create and describe patterns. They explore characteristics of everyday objects and shapes and use mathematical language to describe them.

Helping at home

- Reading a little and often 10 minutes and not always the school book
- Purple book sign and comment
- Stages of reading
 - Develop an interesting in listening to books and looking at pictures, making up stories
 - Understanding what a word is and pointing to words as they read
 - Using phonics knowledge to sound out words e.g. sat, man
 - Recognise sight words e.g. the, to, I
- Homework to embed the learning taking place in class



The Whole School



- School website
www.rowleyparkacademy.org.uk
- Twitter
[@LauraLord35](https://twitter.com/LauraLord35) [@RowParkAcademy](https://twitter.com/RowParkAcademy)
- Masterful Maths, Star Writer, Celebration Assemblies
- The NICER curriculum - Trips and hooks and challenges

Zoom meeting for children

- Friday 10th July
 - Group A -10am
 - Group B – 11am

Bring a favourite toy to show

- Thursday 16th July
 - Group A -10am
 - Group B – 11am

Bring a picture of you family

Welcome pack

- Welcome packs are available to collect from school next week, you will be sent a time slot
- Tapestry – put on things your child enjoys at home

Any Questions?

